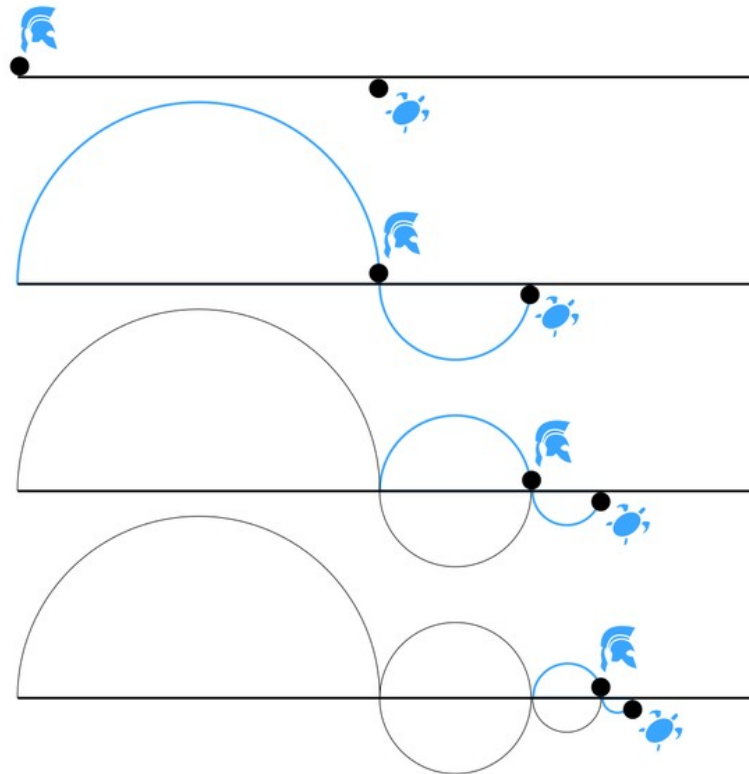


# Cvičení z Matematiky 3

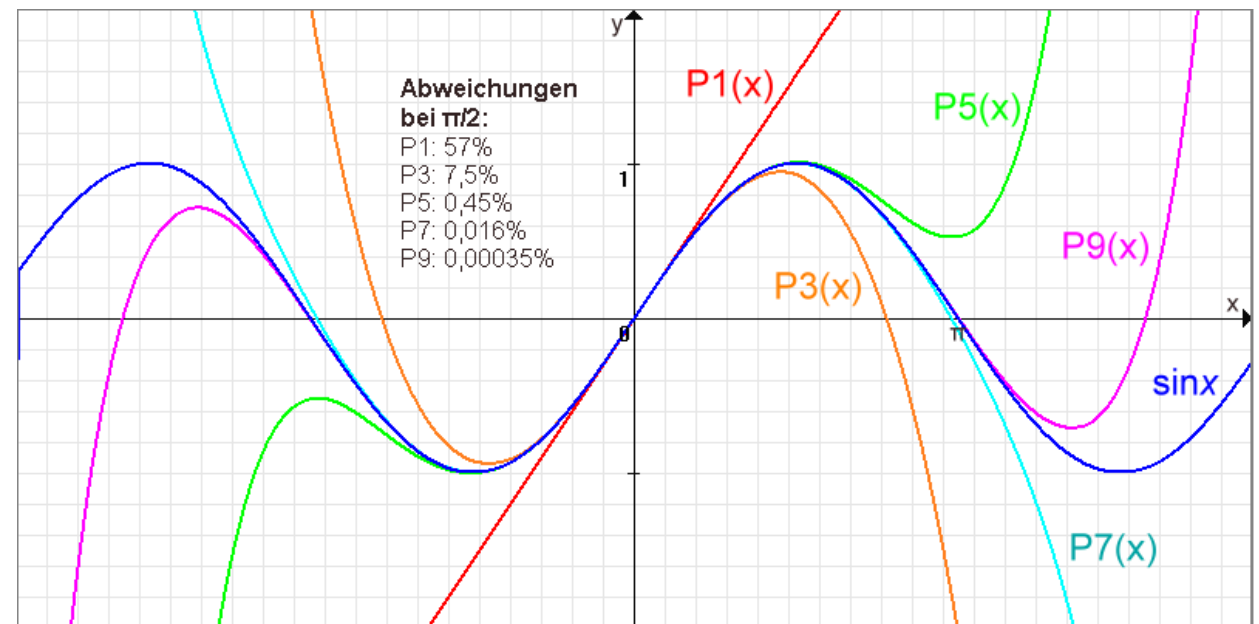
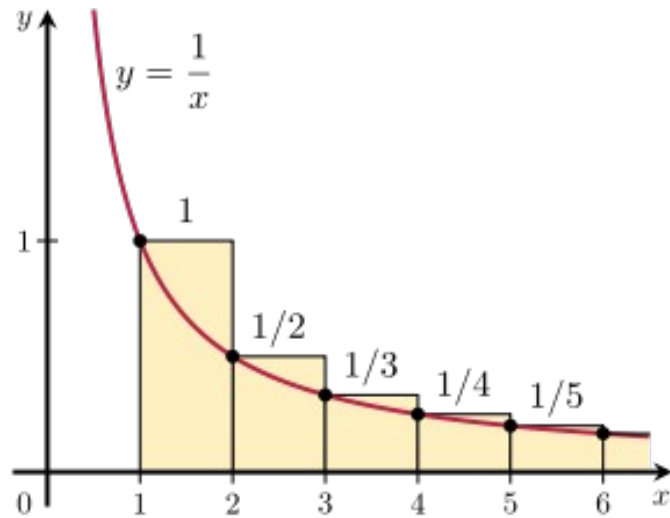
Aneb co nás čeká?

# Číselné řady

- Paradox *Achilla a želvy*

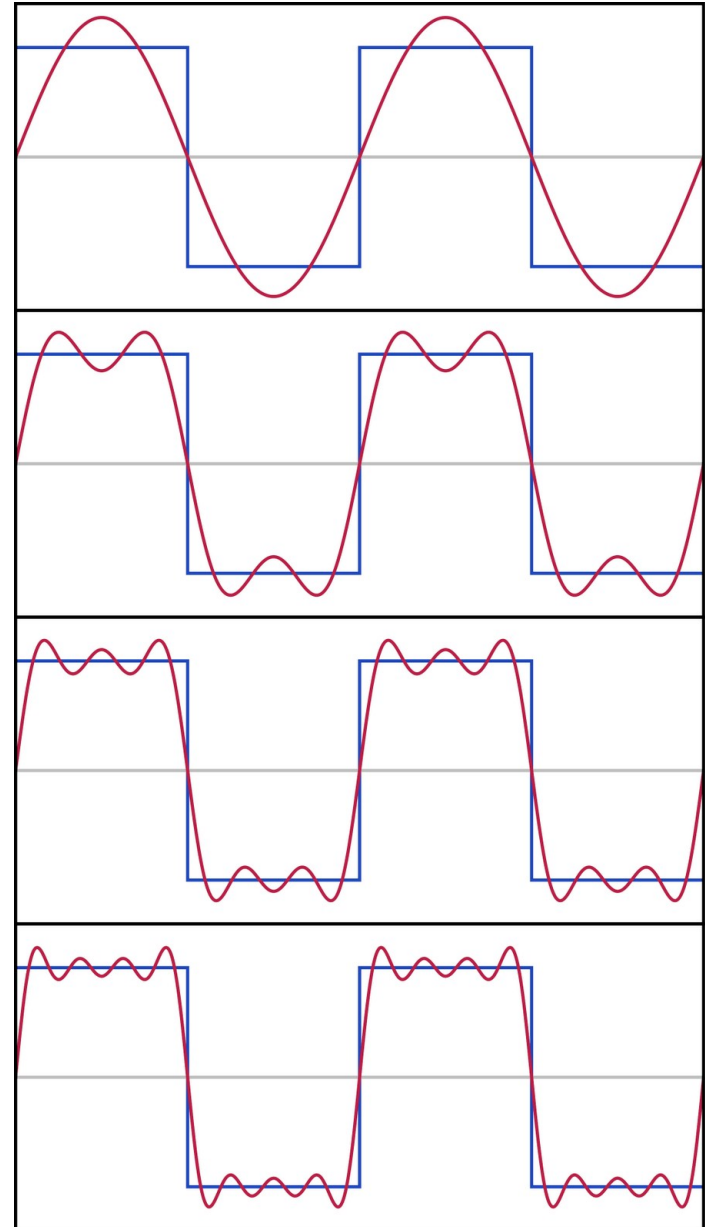


# Číselné řady



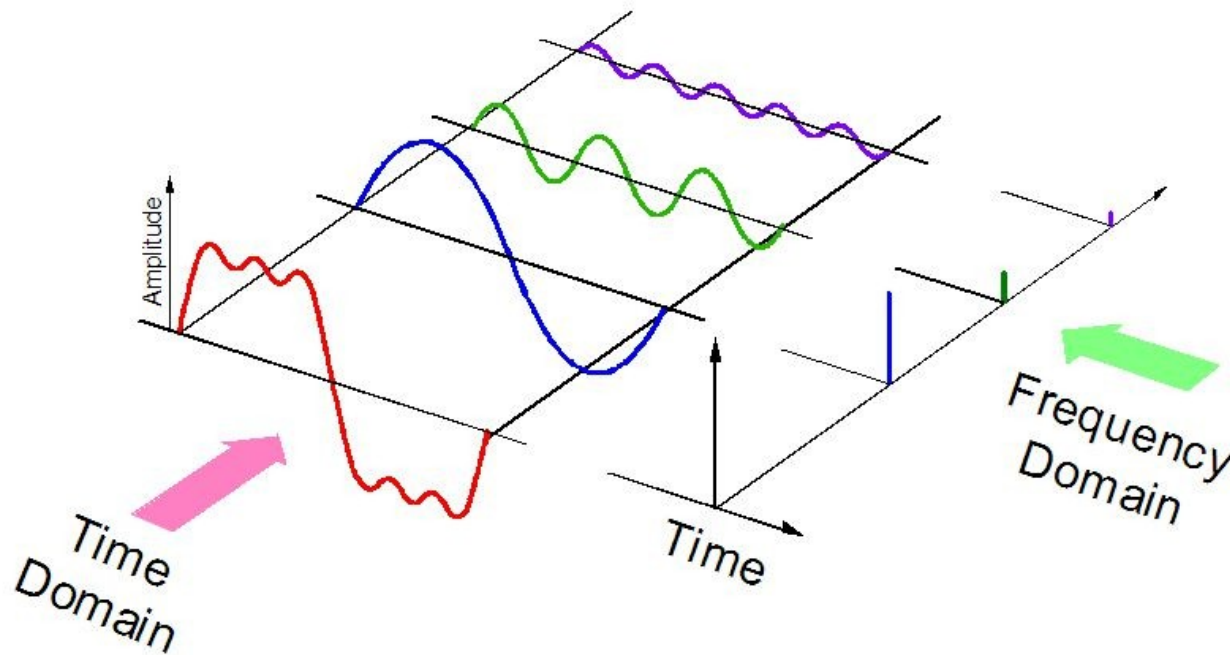
# Fourierovy řady

- Rozvoj funkce do řady sinů a cosinů



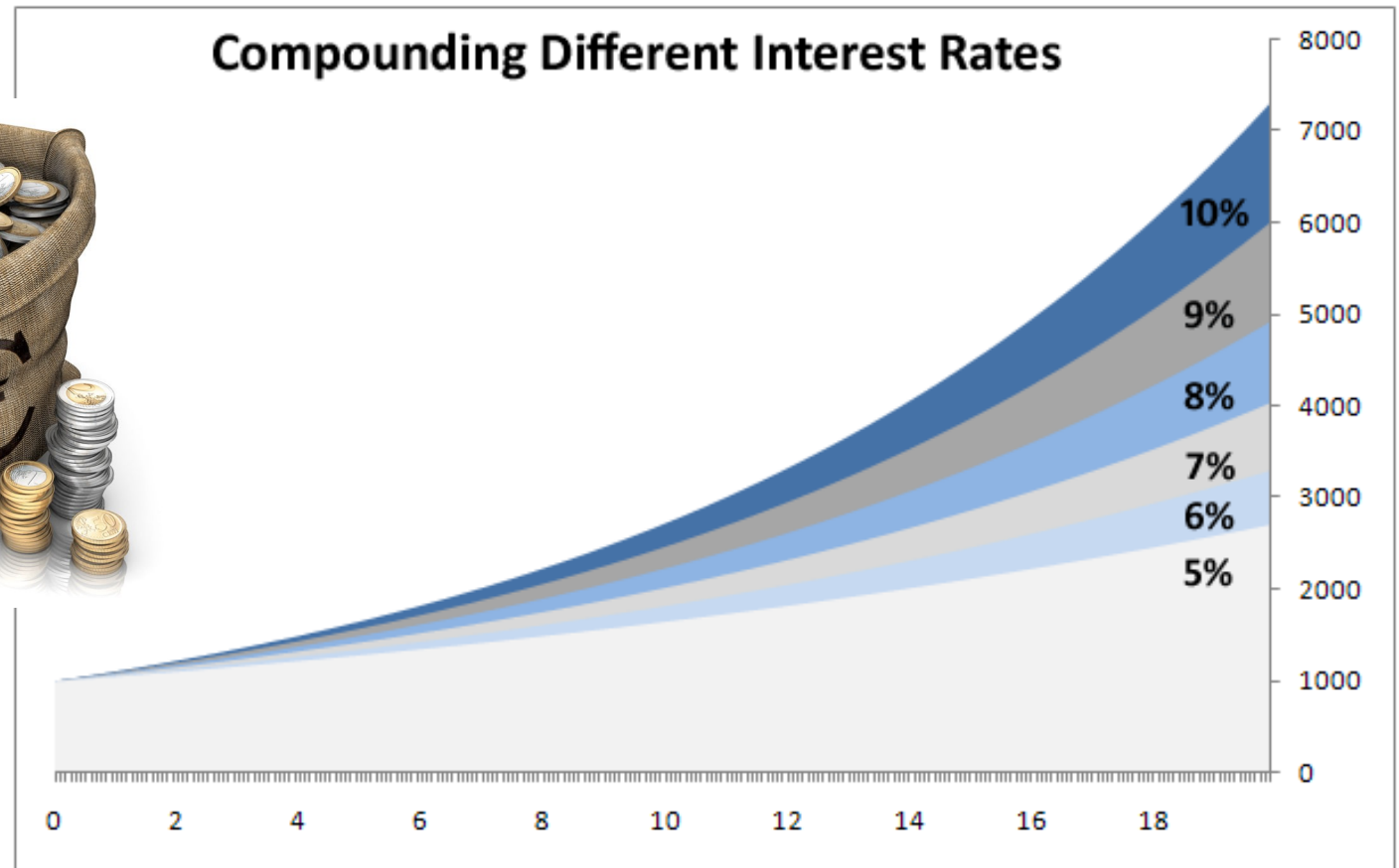
# Fourierovy řady

- Fourierova transformace



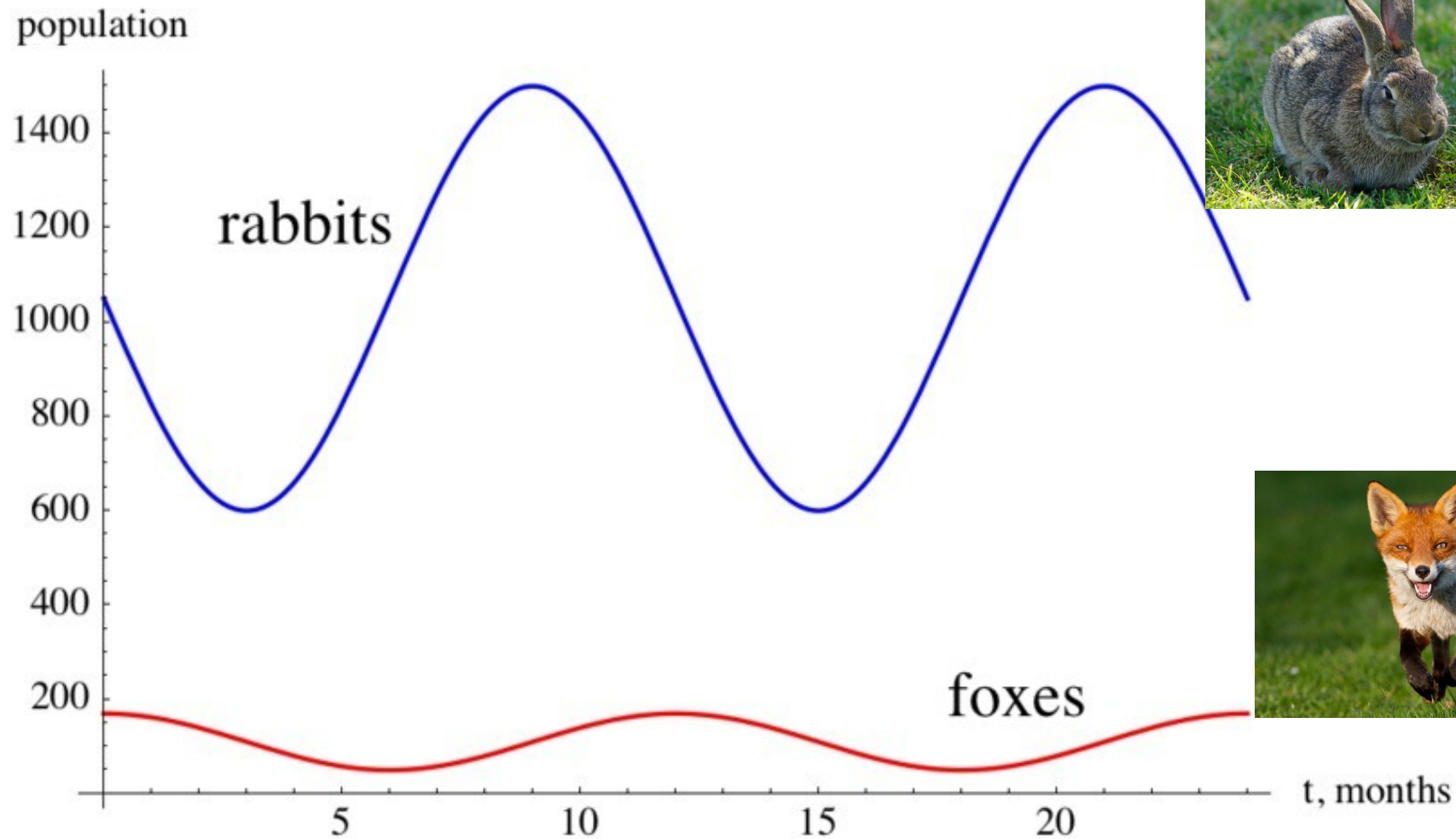
# Diferenciální rovnice

- Nejružnější problémy

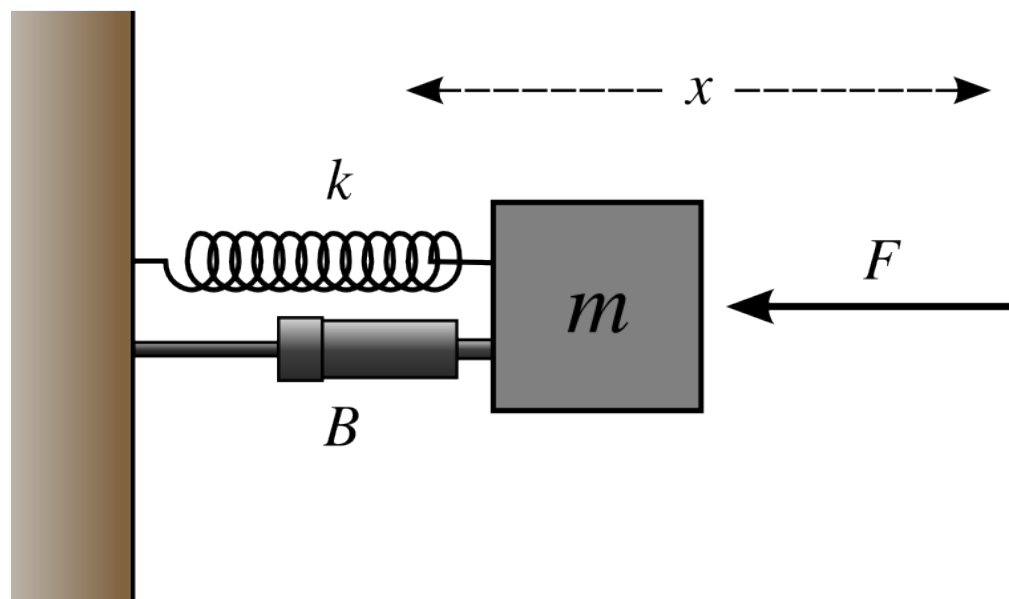
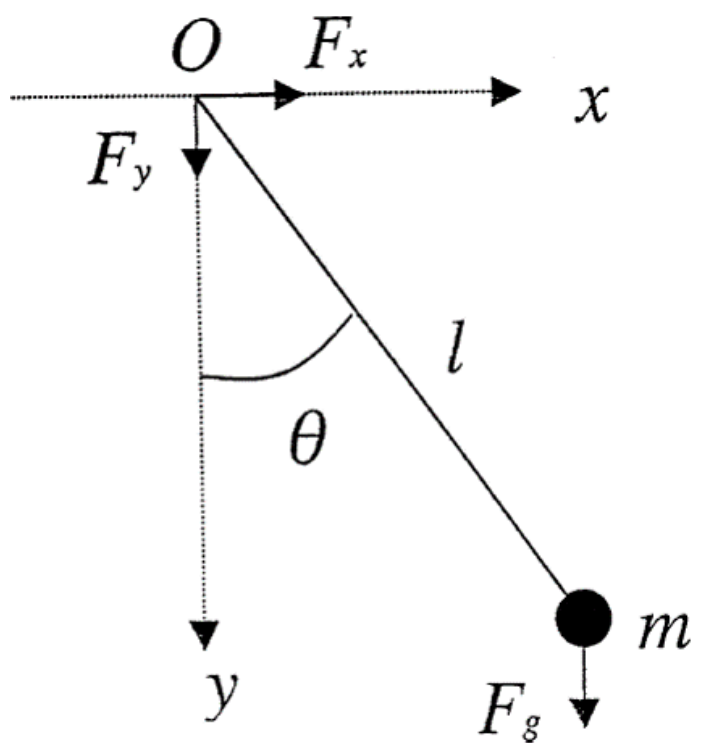


# Diferenciální rovnice

- Nejruznější problémy



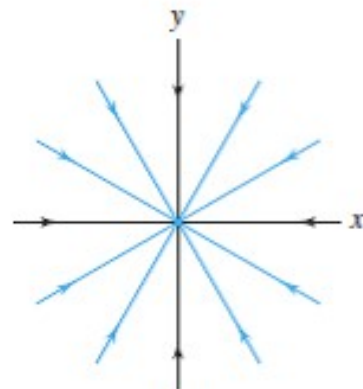
# Diferenciální rovnice



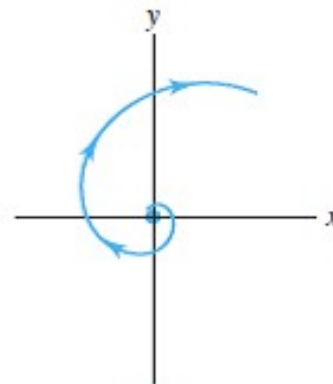


# Diferenciální rovnice

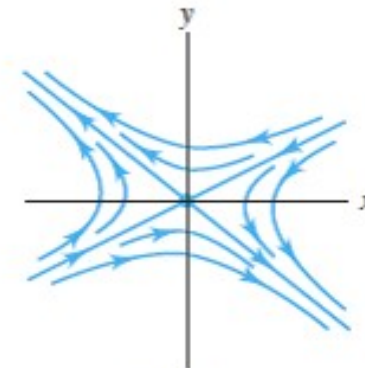
- Stabilita



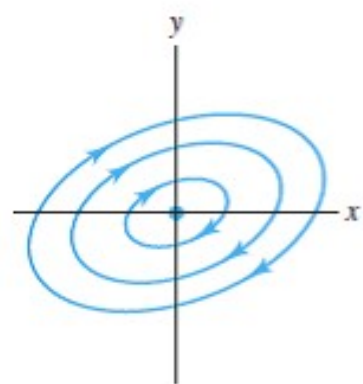
Node  
(asymptotically stable)



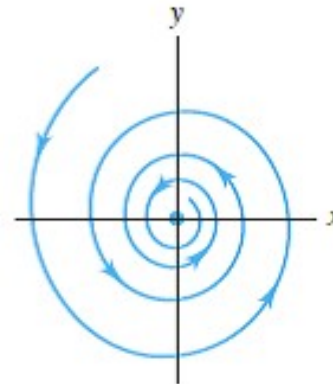
Spiral  
(unstable)



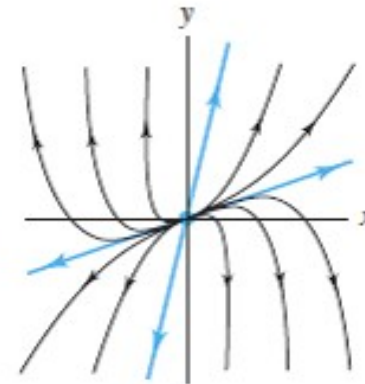
Saddle  
(unstable)



Center  
(stable)



Spiral  
(asymptotically stable)



Node  
(unstable)